

# Under Construction - Q4 2023 Delivery



## Houston Point 290

DEVELOPED BY:

**CREATION** REPE

BUILT BY:

**LGE** | DESIGNBUILD

# HOUSTON POINT 290 HIGHWAY 6 N

## HOUSTON, TX 77095

[VIDEO TOUR HERE](#)

**Richard Quarles, SIOR**  
+1 713 888 4019  
richard.quarles@am.jll.com

**Joseph Berwick**  
+1 713 425 5842  
joseph.berwick@am.jll.com

**David Holland**  
+1 713 888 4095  
david.holland@am.jll.com

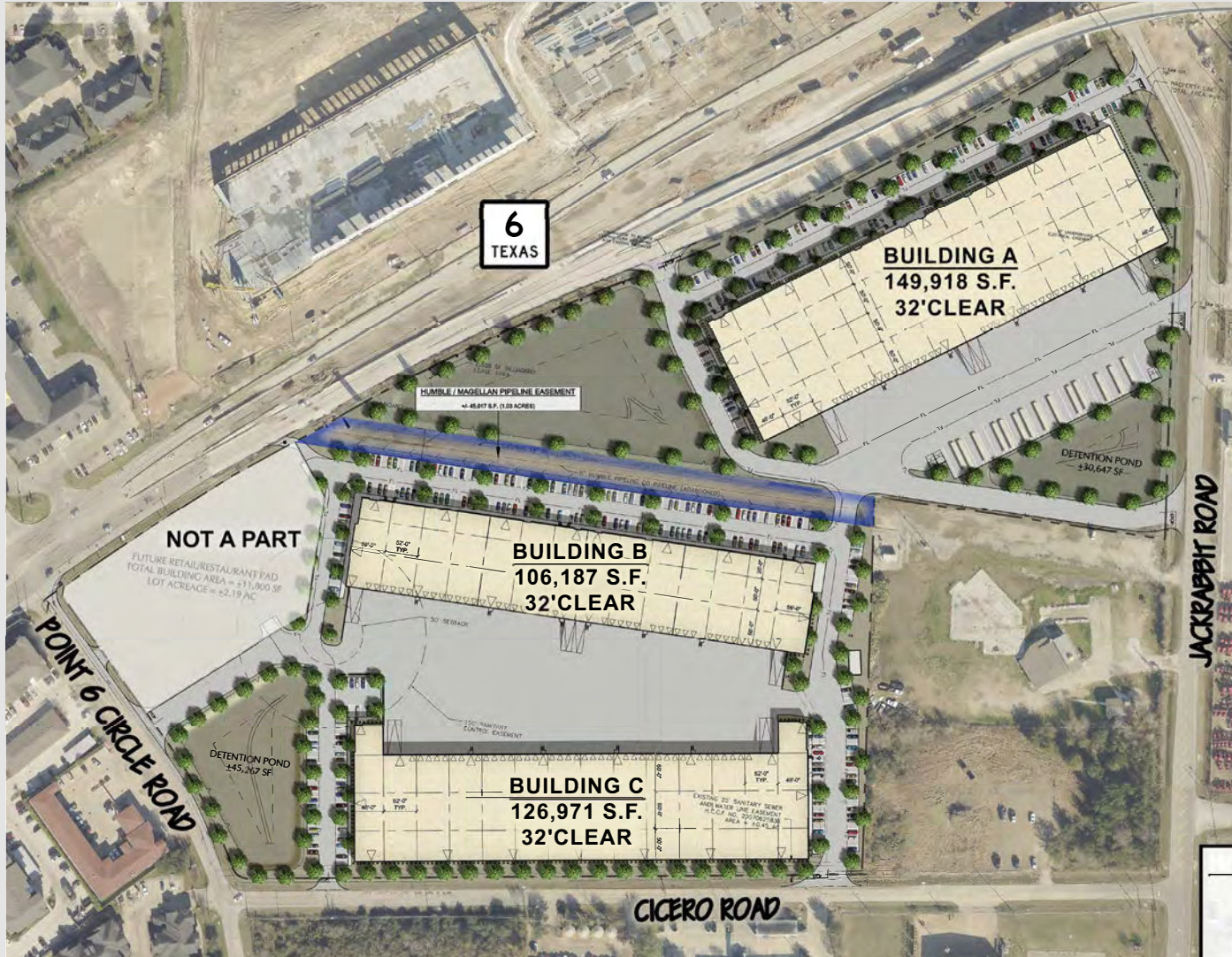
**Eliza Klein**  
+1 713 425 1816  
eliza.klein@am.jll.com



# SITE PLAN

CREATION R  
E  
P  
E

LGE | DESIGNBUILD



## **BUILDING A**

Total SF:	149,918 SF
Configuration:	Rear Load
Building Depths:	210'
Clear Height:	32'
Typical Bay:	52' x 50' w/ 60' speed bay
Dock Doors:	31 (9' x 10')
Ramp:	4 (14' x 16')
Parking Spaces:	166 Spaces
Truck Court:	185'
Trailer Parking:	30 Trailer Spots

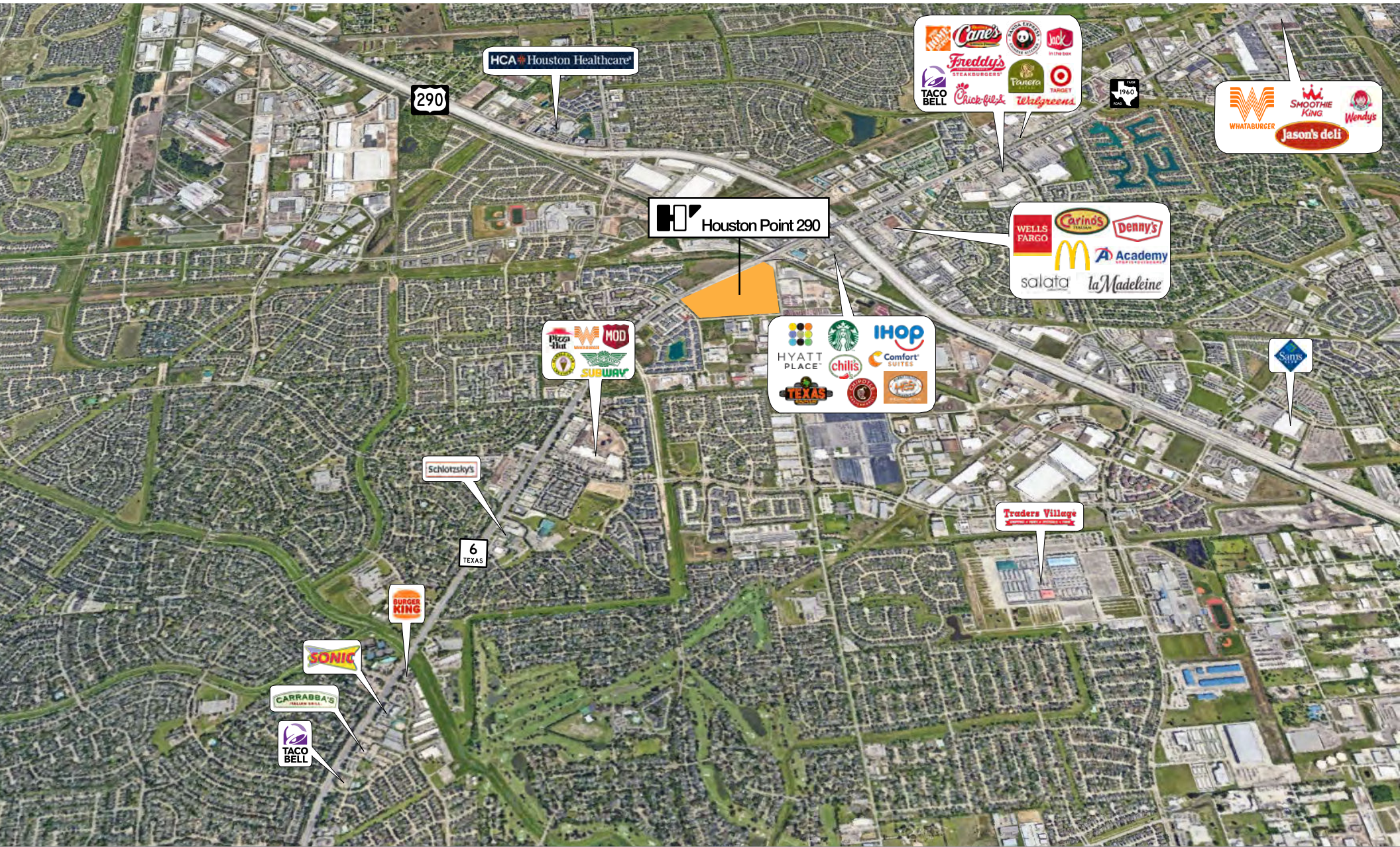
## **BUILDING B**

Total SF:	106,187 SF
Configuration:	Rear Load
Building Depths:	145'
Clear Height:	32'
Typical Bay:	52' x 50' w/ 60' speed bay
Dock Doors:	42 (9' x 10')
Ramp:	4 (14' x 16')
Parking Spaces:	175 Spaces
Truck Court:	185' Shared w/ Building C

## **BUILDING C**

Total SF:	126,971 SF
Configuration:	Front Load
Building Depths:	170'
Clear Height:	32'
Typical Bay:	52' x 60' w/ speed bay
Dock Doors:	38 (9' x 10')
Ramp:	2 (14' x 16')
Parking Spaces:	99 Spaces
Truck Court:	185' Shared w/ Building B

# AMENITIES NEAR HOUSTON POINT 290



Although information has been obtained from sources deemed reliable, JLL does not make any guarantees, warranties or representations, express or implied, as to the completeness or accuracy as to the information contained herein. Any projections, opinions, assumptions or estimates used are for example only. There may be differences between projected and actual results, and those differences may be material. JLL does not accept any liability for any loss or damage suffered by any party resulting from reliance on this information. If the recipient of this information has signed a confidentiality agreement with JLL regarding this matter, this information is subject to the terms of that agreement. ©2021 Jones Lang LaSalle IP, Inc. All rights reserved.

# STRATEGIC ACCESS

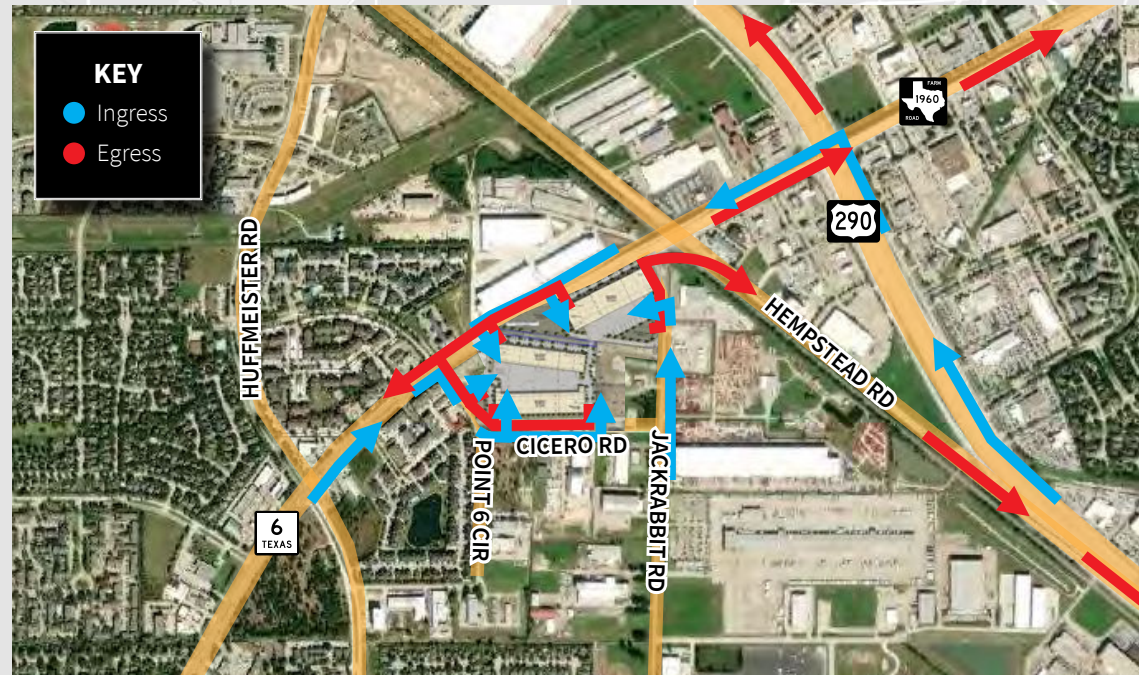
Prime Northwest Houston Location with state of the art building design.

## VIA MAJOR HIGHWAYS

LOCATION	APPROX. MILEAGE
HWY 6	Immediate Access
HWY 290	<1 mile
Beltway 8	5 miles
I-10	10 miles
HWY 99	12 miles
IAH Airport	27 miles
Austin	142 miles
San Antonio	198 miles
Dallas	244 miles

## PROJECT LOCATION ATTRIBUTES

- Prime Northwest Houston location at Highway 6 & Highway 290, providing strategic distribution and operational connectivity.
- Multiple points of ingress/egress offering immediate access to Houston's major Northwest thoroughfares.
- Located immediately off of Hwy 6 / FM 1960 and minutes to Hwy 290.



**Richard Quarles, SIOR**

+1 713 888 4019

richard.quarles@am.jll.com

**Joseph Berwick**

+1 713 425 5842

joseph.berwick@am.jll.com

**David Holland**

+1 713 888 4095

david.holland@am.jll.com

**Eliza Klein**

+1 713 425 1816

eliza.klein@am.jll.com

